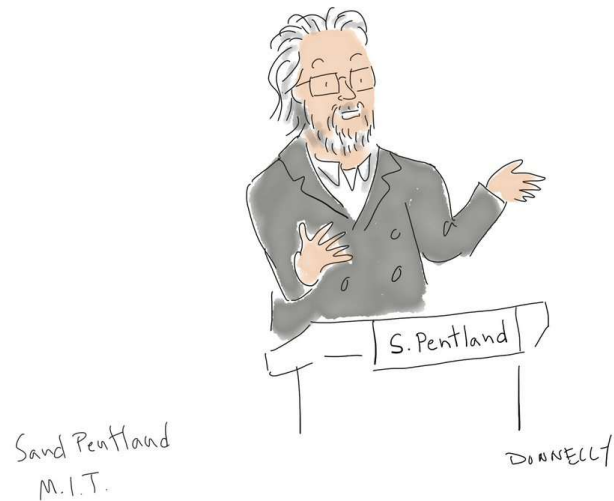


tax data for social good

pentland@mit.edu



Computational Social Science and safe data systems for the new economy

MIT Connection Science

<http://connection.mit.edu>

fairness, bias, and effectiveness in social payments



Colombia

Noriega, Bakker, Pentland

Results:

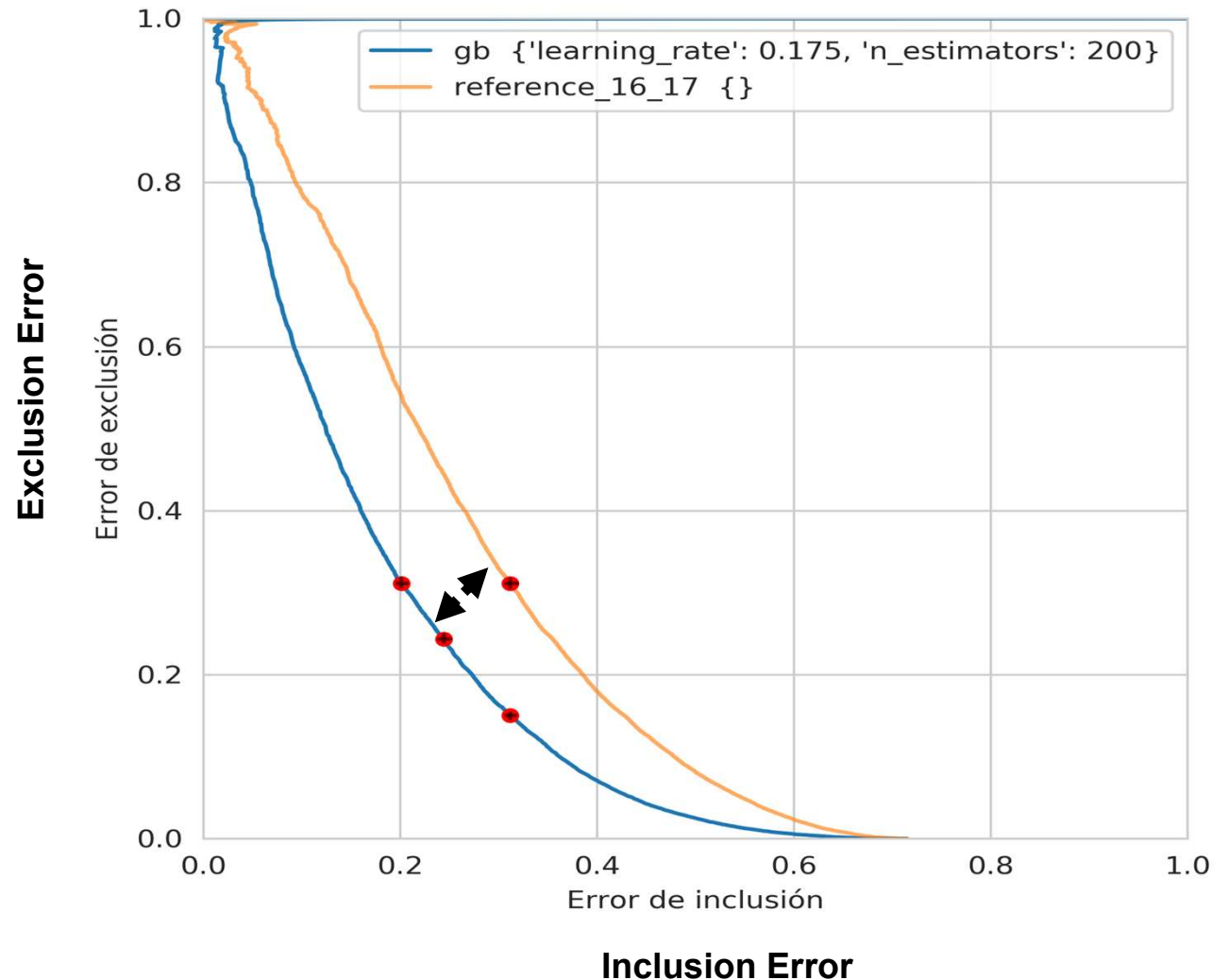
- 21% less exclusion error
- 21% less inclusion error
- at constant budget

=> 920k excluded poor now included

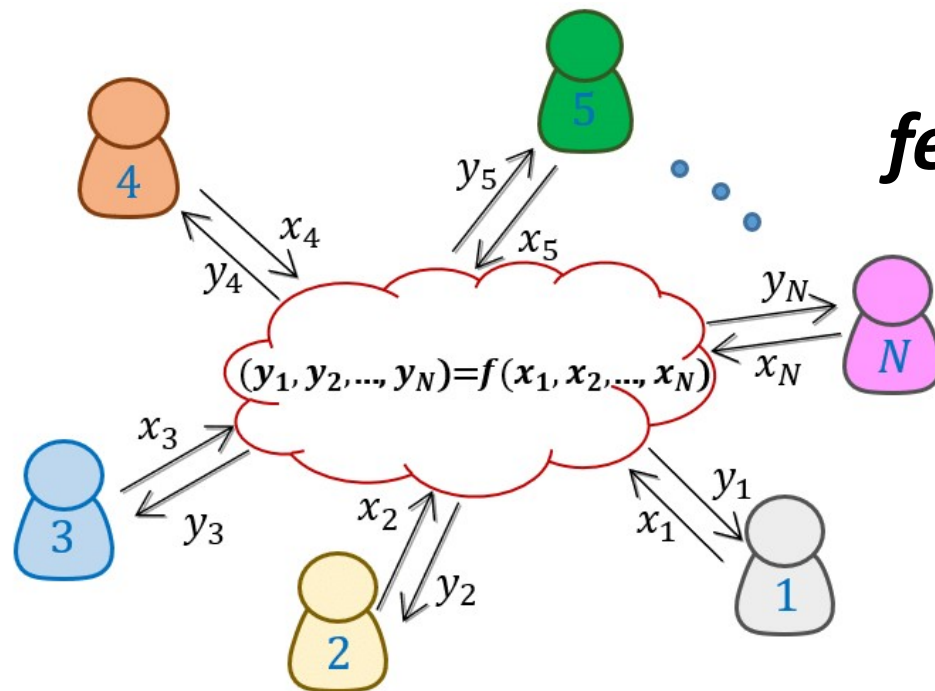


PROSPERiA

Copyright alex pentland 2021 all rights reserved



fraud and avoidance: connecting the dots



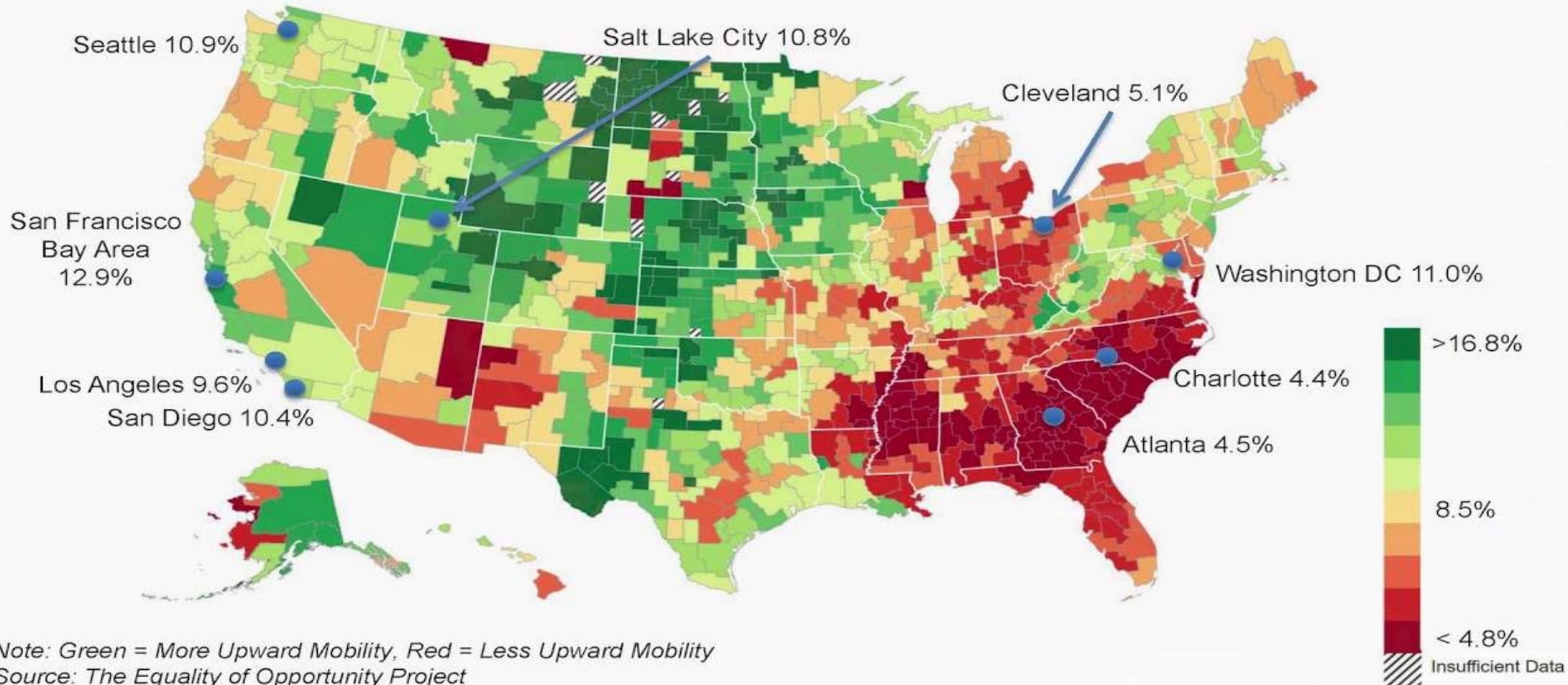
federated AI / machine learning:
you can learn from data that
you don't own and can't see
even if some of it is faulty

Privacy and Byzantine-Tolerance in Cooperative Decision-Making,
AAMAS 2020, Dubey&Pentland

tax data for social good

The Geography of Upward Mobility in the United States

Chances of Reaching the Top Fifth Starting from the Bottom Fifth by Metro Area



building a resilient labor market

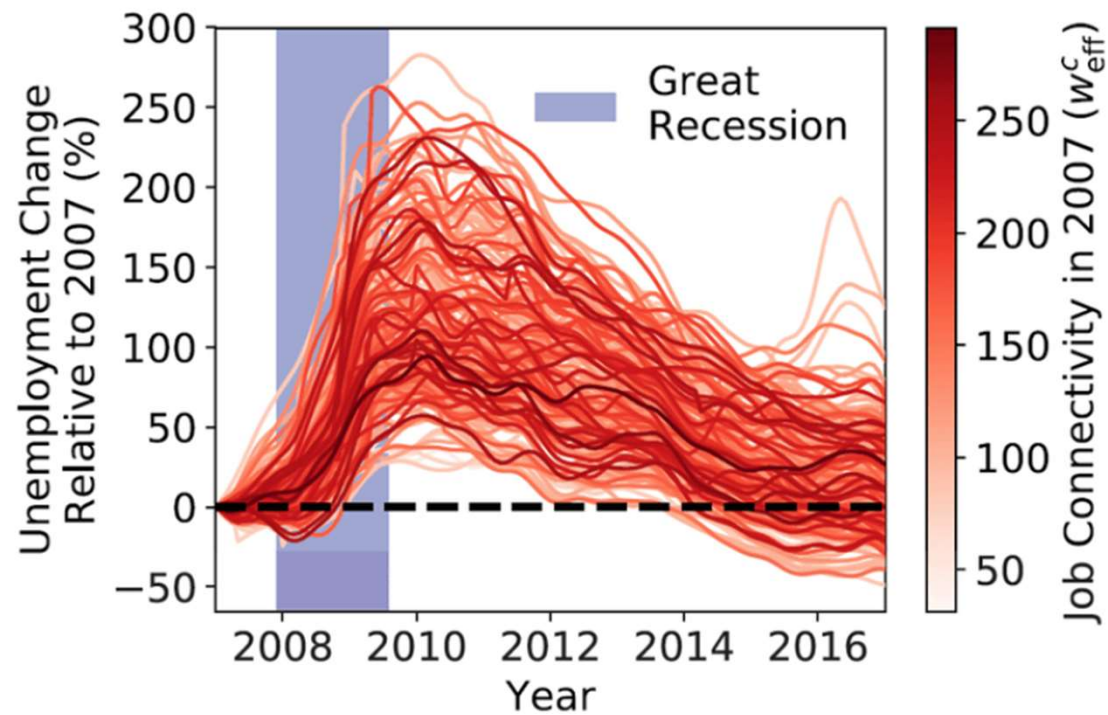


Figure 4 More skills connectivity between jobs increases employment resilience [5].